

PLUG-INS (Add-ons) Tutorial - Filters By Hummie

.8bf - Filters

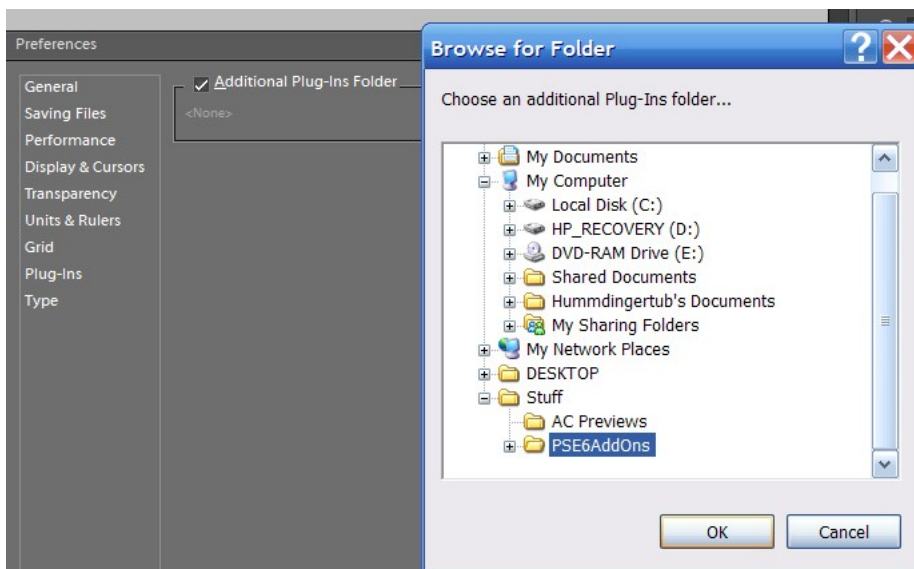
Once installed, filters show up at the bottom of the Filter drop down menu.

It is not recommended due to RAM issues, but these files can permanently installed by placing them in the folder at the below location (with your program closed). The folder may be found similarly in all versions, as well as XP and Vista.

C:\Program Files\Adobe\Photoshop Elements x.0\Plug-Ins\Filters
(replace x.0 with your version of PSE)

The better alternative for installing filters is to direct PSE to the folder on your computer (i.e. My Documents) which contains the .8bf files. In this way, the files are easily backed up also.

In PSE3, under the Edit drop down menu, choose preferences, and then “Plug-ins & Scratch Disks.” In the preferences dialog, check the box for “additional plug-ins folder” and navigate to the folder containing the .8bf files.

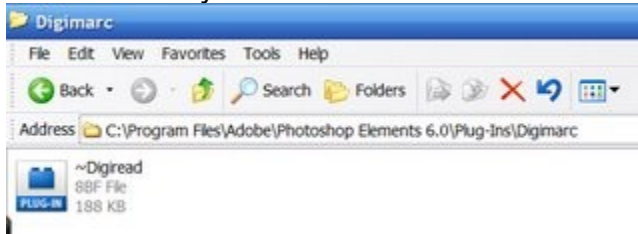


In PSE6 and PSE7, the option is called “Plug-ins” (not plug-ins & Scratch Disks).

Restart PSE.

As mentioned above, too many things installed will bog down your program when you open it. You can keep PSE from loading these filters when opening PSE by adding a tilde character (~) at the beginning of the file name, folder, or directory. The files, or all files in the folder, are ignored by PSE when restarted.

In addition, look at the pre-loaded filters that are installed with PSE. There may be some that you never use. Mark these with a tilde in order to save RAM.



The Digimarc in PSE7 can be found here:

C:\Program Files\Adobe\Photoshop Elements 7.0\Locales\en_US\Plug-Ins\Digimarc

Please note, when you restart PSE and quickly go to see whether or not the filters are in the drop down menu, you cannot see the filters without having an open file, so open a blank file first, and then you will see the filters.

Some popular Digital Scrapbooking filters are:

Simple Filters: <http://www.btinternet.com/~cateran/simple/>

Cybia: <http://www.cybia.co.uk/sitemap.htm>

Smart Curves: <http://free.pages.at/easyfilter/curves.html>