

PLUG-INS (Add-ons) Tutorial - Styles By Hummie

INVISIBLE FOLDERS

Before you begin with plug-ins, there is an important step that is vital to installing several of the plug-ins. The folders in which you place your files is protected and, therefore, invisible. Change the folder settings to see the invisible files. Be very careful what you do after changing the settings. The protection is set up for a purpose, especially to guard against deletion of important files.

Windows XP

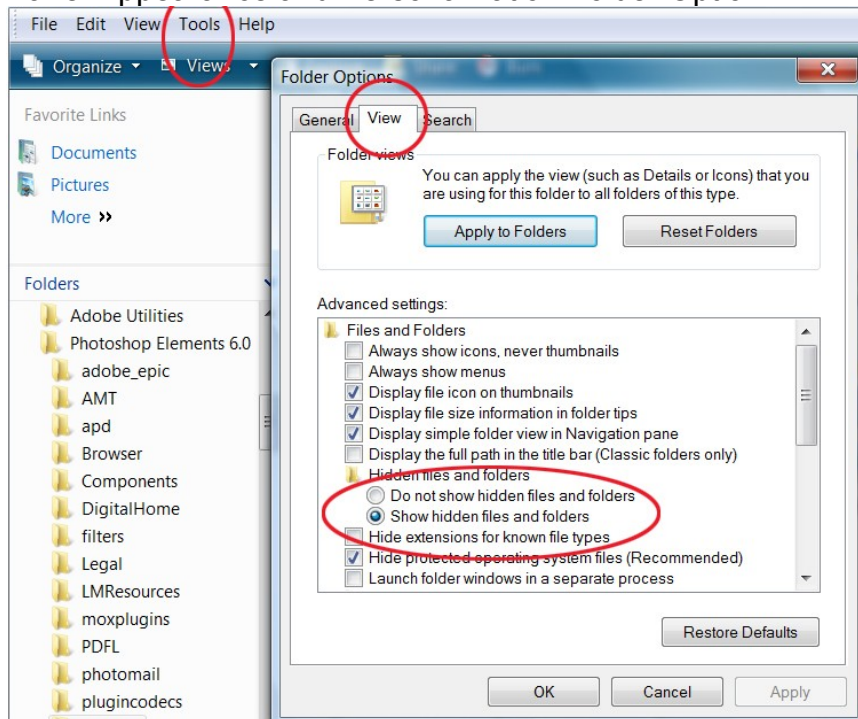
Open a folder, any folder, click on the Tools drop down menu and then choose Folder Options, click on the View tab.

Scroll to find "Hidden Files and Folders" and click on "Show Hidden Files and Folders." Click ok.

In Vista

Open a folder and click on the Tool drop down menu to choose Folder Options (or in the Organize drop down menu choose Folder and Search Options). In the popup box, click the View tab. Scroll to find "hidden Files and Folders" and place a checkmark in the box.

In addition, you can also find the same options by going through the Control Panel/Appearance and Personalization/Folder Option.



BASICS

Layer Styles have an extension of .asl.

Layer Styles need to be put in the Adobe folders to work

Be careful how many you install or PSE will take forever to open.

INSTALLATION

To install Layer Styles, copy and paste them to the folder below (with PSE closed). Restart PSE.

XP

PSE 3 & 4

C:\Program Files\Adobe\Photoshop Elements 3.0\Presets\Styles

PSE 5

C:\Documents and Settings\All Users\Application Data\Adobe\Photoshop Elements\5.0\Photo Creations\Special Effects\Layer Styles

*Create a new folder within this folder for the styles within this folder; otherwise, they will appear in the Bevel styles

PSE 6

C:\Documents & Setting\All Users\Application Data\Adobe\Photoshop Elements\6.0\Locale\en-US\Photo Creations\Layer Styles

PSE 7

C:\Documents & Setting\All Users\Application Data\Adobe\Photoshop Elements\7.0\Photo Creations\layer styles

VISTA

PSE 5

C:\ProgramData\Adobe\Photoshop Elements\5.0\Photo Creations\special effects\layer styles

*Create a new folder within this folder for the styles within this folder; otherwise, they will appear in the Bevel styles

PSE 6

C:\Program Data\Adobe\Photoshop Elements\6.0\Locale\ en-US\Photo Creations\Layer Styles

PSE 7

C:\ProgramData\Adobe\Photoshop Elements\7.0\Photo Creations\layer styles

ERRORS/PROBLEMS

In PSE6 and PSE7, several types of error messages may be generated. First, try deleting the “MediaDatabase.db3” file in this folder:

XP

C:\Documents and Settings\All Users\Application Data\Adobe\Photoshop Elements\6.0\Locale\en_US

C:\Documents and Settings\All Users\Application Data\Adobe\Photoshop Elements\7.0\Locale\en_US

VISTA

C:\ProgramData\Adobe\Photoshop Elements\6.0\Locale\en_US

C:\ProgramData\Adobe\Photoshop Elements\7.0\Locale\en_US

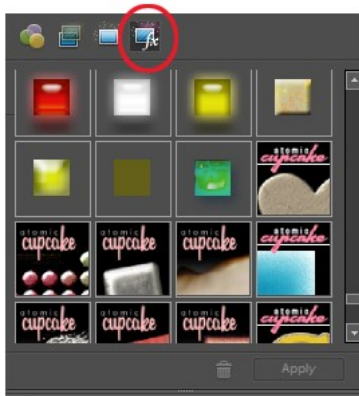
Restart PSE and the file will regenerate. It does take a while to rebuild.

Another cause of an error message is due to corrupt or incompatible layer styles. In this case, it may be necessary to install one layer style at a time to test its capability with the program.

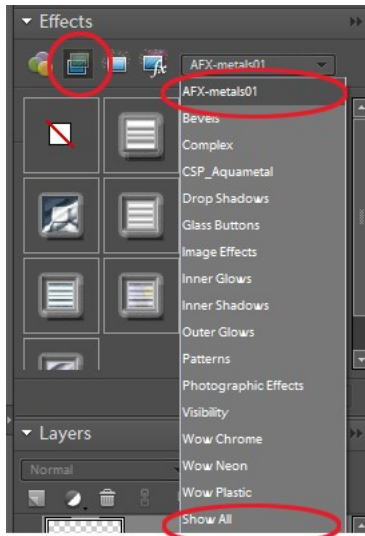
Removing styles may also cause errors creating the need to delete the MediaDatabase.

CATEGORIES

In earlier versions of PSE, categories of styles could be created simply by creating new folders within the main folder where the files are dropped.



First, note that both Layer Styles and Actions can be found by clicking on the 4th icon in the palette. It does take a while for them to open up. In addition, they are all grouped together alphabetically by name which makes it very difficult to find what you are looking for.



In addition, layer styles may be found under the second icon by clicking on “Show All.” Once again, the styles are lumped together alphabetically by name.

As can be seen on this example as circled, once I have installed an xml file, all of the files with this .asl can be found by clicking on the new category.

PSE 6 Instructions

The .xml file must be created and added in this folder:

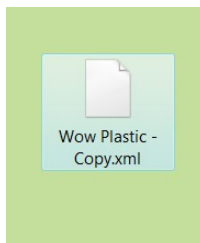
XP

C:\Documents & Setting\All Users\Application Data\Adobe\Photoshop Elements\6.0\Locale\en-US\Photo Creations Metadata\Layer Styles

VISTA

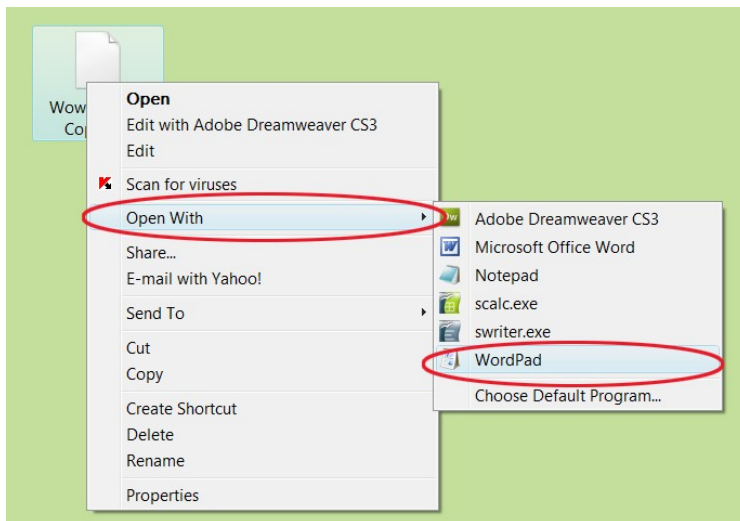
C:\ProgramData\Adobe\Photoshop Elements\6.0\Locale\en_US\Photo Creations Metadata\layer styles

To create a new xml file:



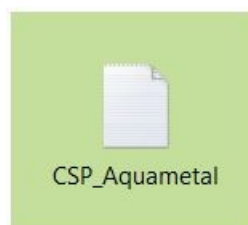
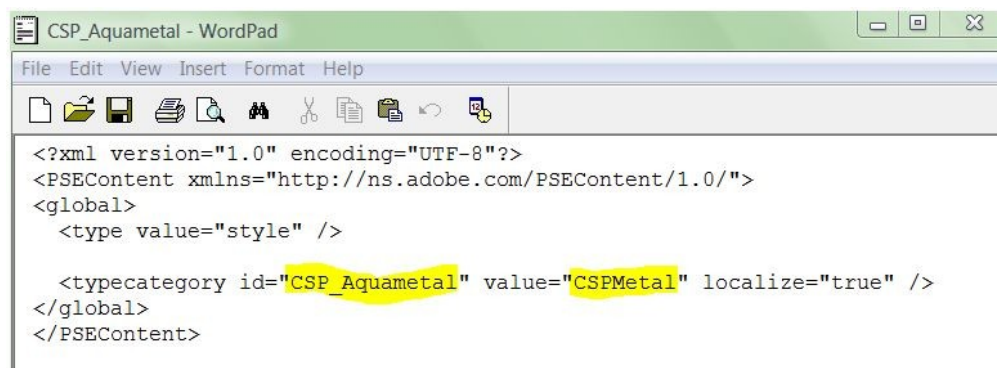
Copy one of the xml files from the existing file onto the desktop to use as a form.

Thereafter, open the file with WordPad. (Notepad can be used, but often it puts odd line breaks in code files.) Also, you may also set your Default Program for all xml files to WordPad so that they will always open in this program.



Change the “typecategory id” to the exact name of the .asl file.
Change the “value” to set the category name. This can be any name of your choosing.
The fields are between quotation marks.

Save the file.



Next, rename the file exactly as the name of the .asl file. The name of the .asl file must be identical to the name of the .xml file.

Cut and paste this new .xml file back into the appropriate folder.

To place styles from an additional .asl file under the same category, use the exact name in the “value” field as previously used.

Each .asl files must have its own .xml file.

Delete the “MediaDatabase.db3” file in this folder:

XP

C:\Documents and Settings\All Users\Application Data\Adobe\Photoshop Elements\6.0\Locale\en_US

VISTA

C:\ProgramData\Adobe\Photoshop Elements\6.0\Locale\en_US

Restart PSE6 and the file will regenerate. It will take some time to rebuild.

PSE 7 Instructions

The .xml file must be created and added in this folder:

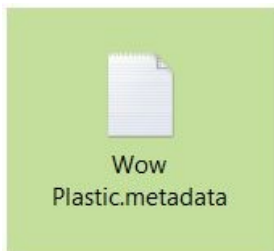
XP

C:\Documents and Settings\All Users\Application Data\Adobe\Photoshop Elements\7.0\Photo Creations\layer styles

VISTA

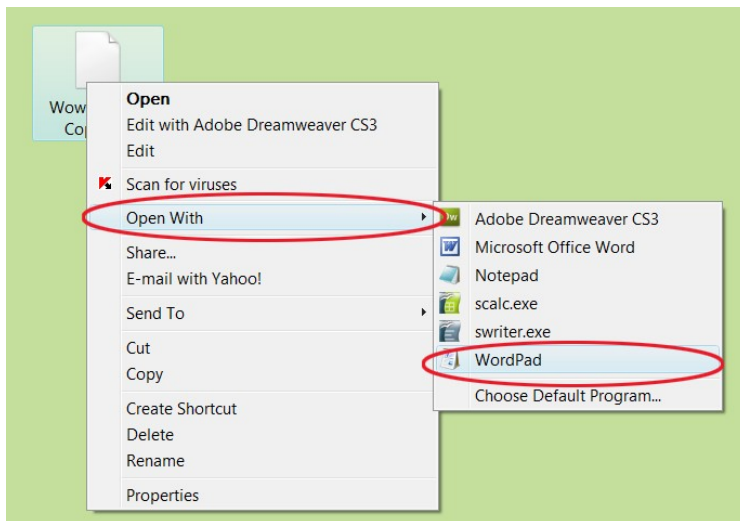
C:\ProgramData\Adobe\Photoshop Elements\7.0\Photo Creations\layer styles

To create a new xml file:

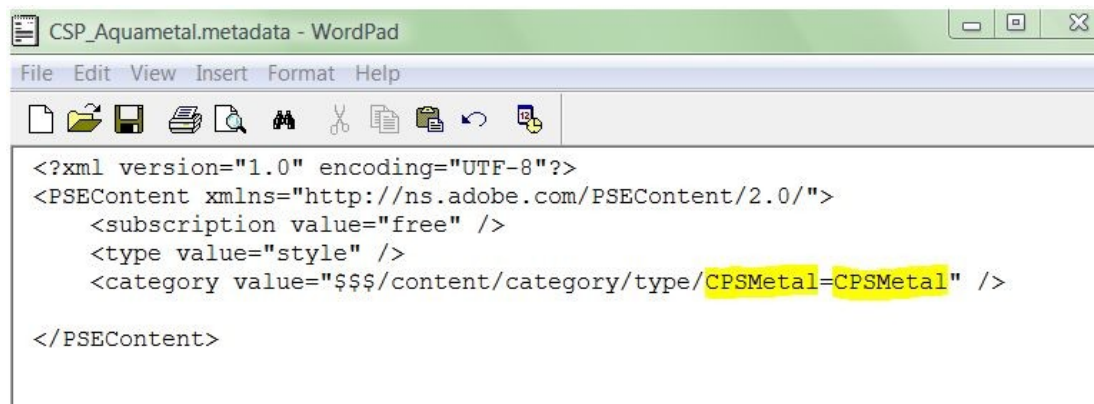


Copy one of the xml files from the existing file onto the desktop to use as a form.

Thereafter, open the file with WordPad. (Notepad can be used, but often it puts odd line breaks in code files.) Also, you may also set your Default Program for all xml files to WordPad so that they will always open in this program.



Delete all of the codes which begin with `<item id="#">` and end with `</item>`.
Change the "category/type/" fields to set the category name. This can be any name of your choosing.
It will show up in the drop down box.



Save the file.



Next, rename the file exactly as the name of the .asl file. The name of the .asl file must be identical to the name of the .xml file. Note that the file name must end with ".metadata."

Cut and paste this new .xml file back into the appropriate folder.

To place styles from an additional .asl file under the same category, use the exact name in the “content/style” fields as previously used.

Each .asl files must have its own .xml file.

Delete the “MediaDatabase.db3” file in this folder:

XP

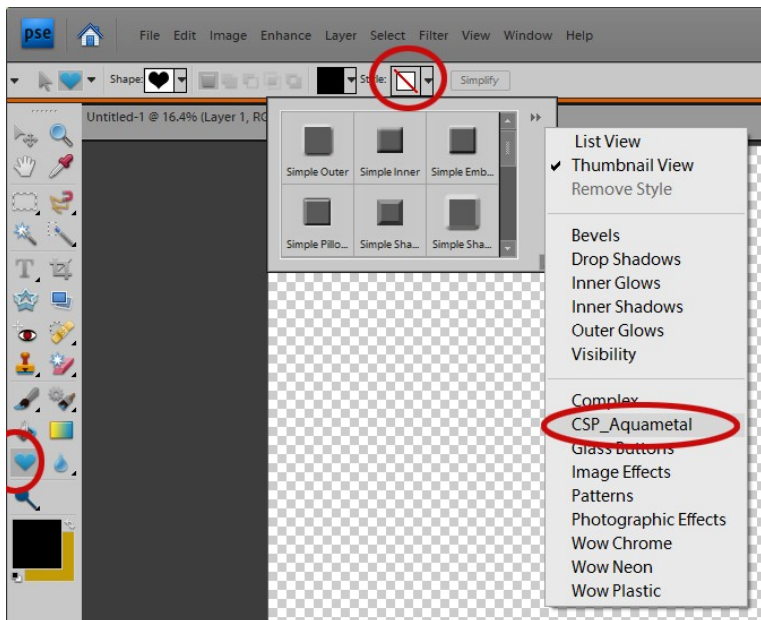
C:\Documents and Settings\All Users\Application Data\Adobe\Photoshop Elements\7.0\Locale\en_US

VISTA

C:\ProgramData\Adobe\Photoshop Elements\7.0\Locale\en_US

Restart PSE7 and the file will regenerate. It will take some time to rebuild.

STYLES IN PRESET FOLDERS



Styles must be placed in an additional folder to make them available in the toolbar for the shape tool.

Copy and paste the .asl files into this folder in PSE7 (Vista)

C:\Program Files\Adobe\Photoshop Elements 7.0\Presets\Styles

*Replace the version number with your version of Elements.